

# WHAT WE DO

**FasterCures is not just our name — it's our mission.**

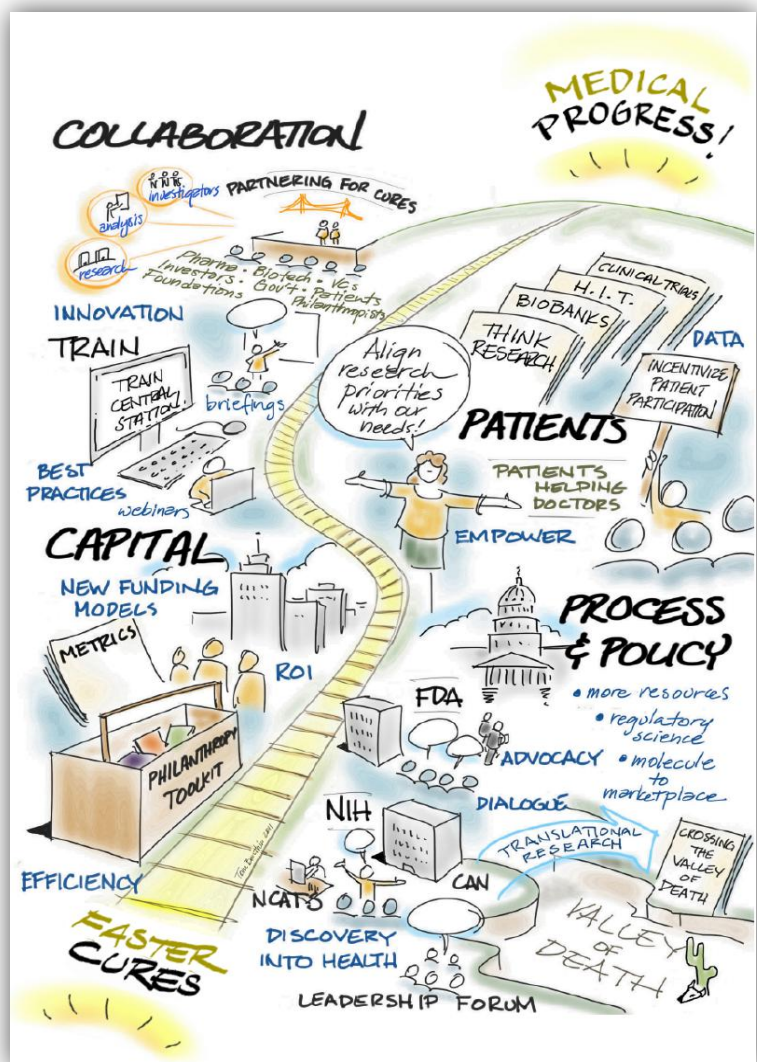
We are an “action tank” that works to improve the medical research system— so that we can speed up the time it takes to get important new medicines from discovery to patients.

We have a number of laser-focused, high-impact programs that allow us to educate stakeholders about the barriers, amplify solutions that could pave the way to progress, and create opportunities for key leaders to come together and get things done.

We work alongside patient advocates, researchers, investors, and policymakers across all sectors of the medical research and development system to achieve the following strategic goals:

- **STIMULATE INNOVATIVE COLLABORATIONS** across all sectors — academia, government, industry, investors, and nonprofits.
- **INCREASE PATIENT ENGAGEMENT** in research and optimize use of patient data.
- **IMPROVE RESEARCH PROCESS & POLICY** to support efficient development and approval of new therapies.
- **FACILITATE GREATER ACCESS AND MORE STRATEGIC ALLOCATION OF CAPITAL** to support results-driven medical research.

FasterCures, the Milken Institute’s Center for Accelerating Medical Solutions, is nonprofit, nonpartisan, and not affiliated with interest groups.



**FasterCures is steeped in the design, development, implementation, and impact measurement of the following strategic programs:**

**COLLABORATION**

- PARTNERING FOR CURES**
  - Brings non-traditional allies together to collaborate and create new business approaches vital to turning breakthroughs into life-saving therapies. Now in its third year, this annual event has become the venue for academia, government, industry, and nonprofits to easily find each other, share ideas openly, and partner in a tangible way.
- THE RESEARCH ACCELERATION AND INNOVATION NETWORK (TRAIN)**
  - Connects dozens of disease research organizations with results-oriented approaches in an effort to amplify best practices, share resources, and promote innovative models.
    - TRAIN Central Station**, a free, online public portal, allows real-time sharing of valuable information and tools for venture philanthropy groups. It saves time by preventing duplication of efforts, and applying processes already proven to be effective.
- VENTURE PHILANTHROPY PARTNERSHIP ANALYSIS**
  - Lays out a rigorous quantitative and qualitative analysis and evaluation of the extent and nature of nonprofit/for-profit relationships in medical research in an effort to elevate their profile and foster increased interest in cross-sector collaboration.
- INTELLECTUAL PROPERTY (IP) PRIMER**
  - Looks carefully at IP challenges that hold back collaboration and spotlights innovative, effective solutions for sharing data while protecting interests of research stakeholders. This Primer is designed to provide a foundation of understanding of what many point to as one of the crucial factors that stand in the way of progress.

**PATIENTS**

- PATIENTS HELPING DOCTORS (PHD)**
  - In fighting disease, patience is not a virtue — patients are. Through PHD, we focus our efforts on unlocking patient information — medical records and biological material such as tissue, blood, and DNA — and making these available to clinical researchers in a meaningful way.
    - Still Thinking Research report**, an update to the 2005 *FasterCures Think Research* analysis, continues to call for integrating research into the health information technology framework to achieve earlier and better diagnosis and more effective prevention strategies and cures. This report examines current policies and existing practices, and provides clear-cut recommendations for action.
    - Banking on Trust whitepaper** outlines the barriers to biobanking and spotlights creative approaches for the collection and application of biological materials in research to advance the search for new diagnostic and therapeutic tools. This is an outcome of several years of research and interaction with the biobanking and disease research communities.

**PROCESS AND POLICY**

- SCIENCE AND PROGRESS AT THE U.S. FOOD AND DRUG ADMINISTRATION (FDA)**
  - Identifies actionable and practical strategies needed to improve the regulatory system so it can keep pace with medical and technological advances. Built on expert opinion, objective due diligence, and landscape analysis, strategies include advocating for greater support for FDA, and informing policymakers and stakeholders about the importance of regulatory science in accelerating medical progress.
- TRANSLATIONAL RESEARCH ACROSS SECTORS**
  - Ensures that translational research is a priority at the National Institutes of Health (NIH) and across other research institutions through a wide range of efforts aimed at engaging innovators and investors in bridging this critical gap in drug development. Following the release of the *Crossing Over the Valley of Death* white paper that articulated both challenges and solutions, the focus is now on advancing public and private sector policies and programs that will foster translation.
- ADVOCACY BEST PRACTICES**
  - Examines the elements of the HIV/AIDS advocacy movement and its impact on medical research through the report, *Back to Basics: HIV/AIDS Advocacy as a Model for Affecting Change*. Informed by personal interviews with HIV/AIDS advocacy leaders and a comprehensive literature review, the report explores what lessons could or should be replicated by those trying to affect change now.

**CAPITAL**

- GIVING SMARTER TOOLKIT**
  - Helps ensure private capital is wisely directed to advance medical progress. Elements of the toolkit include *Getting Started*, an overview of the R&D process and players, and *Giving Smarter*, which provides a framework for evaluating giving decisions and preferences. Focus is on working with philanthropic partners to better allocate funding to the early-stage, high-risk research needed to further medical innovation.
- FINANCIAL INNOVATIONS LAB**
  - Brings together innovators from a variety of industries in a workshop to design and vet potential financing and research models that provide access and direct capital to early-stage, high-risk research.